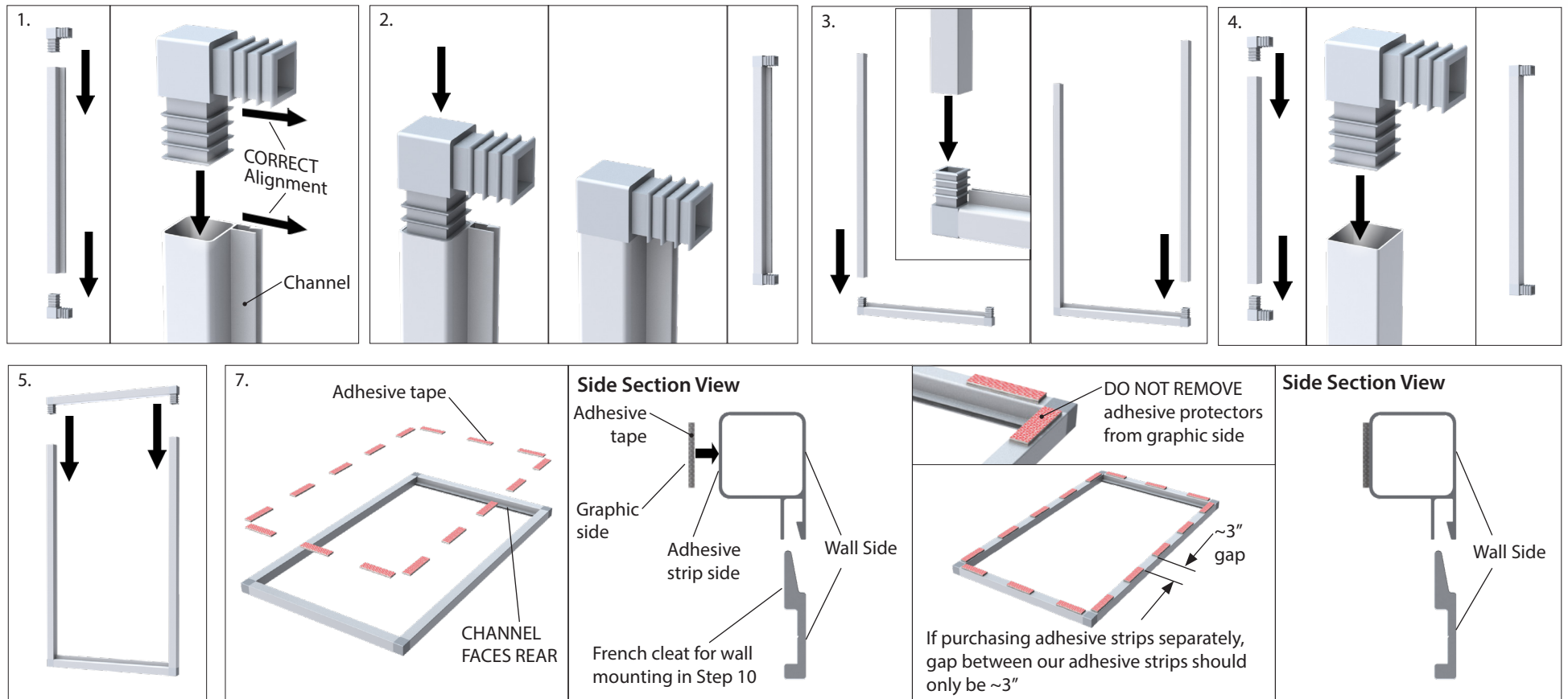
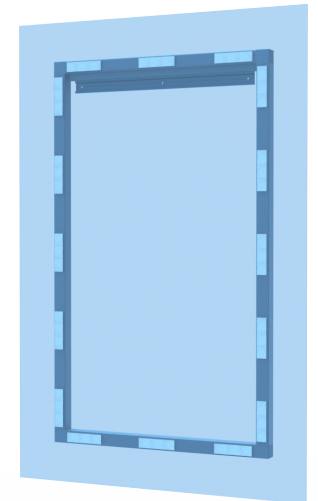


# Floating Standoff Frame - OAT Series

1. Locate the top section of the frame, which has a square profile with an additional channel for hanging. Insert a plastic L corner into each end of the top section, with the leg of the corner running in the same direction as the mounting channel of the top section.
2. To fully install the L corner bracket, either place the L on a soft non-marring surface with the tube pre-installed and slowly and carefully press down, or if available, use a rubber mallet to install the corner. Fully install the corners on the top section of the frame.
3. Locate the side sections of the frame, which are both 1" Squares and the same length. Attach one end of each side section to the top section of the frame. Fully install the corners as per Step 2.
4. Insert the plastic corners into each end of the bottom section, which is a 1" Square equal in length to the top in between the side sections. Fully install the corners per Step 2.
5. Place the bottom section, with the corners pre-installed over the sides, and fully install the corners Per Step 2.
6. To ensure optimum adhesion, clean the surface of the frame and the back of the media to be applied. A mixture of ~50% Isopropyl Alcohol (rubbing alcohol) and water works for many surfaces. Ensure both surfaces are fully dry before applying adhesive (not shown).
7. The High Bond tape provided is meant to be installed on the graphic (non-wall) side of the frame. Evenly space and mount the provided High Bond tape strips along the graphic (non-wall) side of the frame. Do not remove adhesive protectors from graphic side yet.



OAT1830 shown

# Floating Standoff Frame - OAT Series

8. Lay the graphic face down on a clean, non-abrasive surface that won't damage the print. Without removing the adhesive protectors of the adhesive strips, place the frame face down onto the back of the graphic. Center the frame on the graphic and use a pencil to lightly trace the outer rectangle of the frame.
9. Remove the adhesive protectors from the adhesive strips, and with the frame in a flat position, place the frame into the center of the rectangle and press firmly on each side to form a bond between the graphic and the adhesive. Allow adhesive to set for a minimum of 24 hours before hanging graphic.
10. Using screws and anchors appropriate for your wall and for the weight of your media, mount the included French cleat to the wall as shown in attached image.
11. Hang the frame onto the French cleat by engaging the channel of the frame top tube over the top edge of the French cleat.

